



User manual
French version

LUXMAIN

Operating and control manual for a lifting platform



EN

1-18

QUICK LIFT L520E

Imported by:

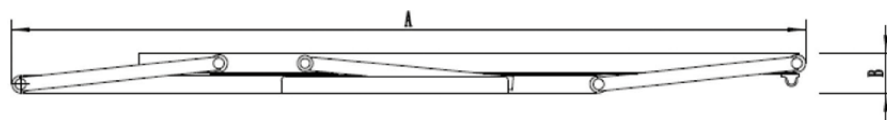
GYS FRANCE
www.gys.fr

Made in China:

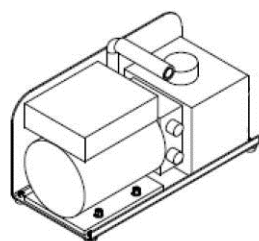
Yantai Tonghe Precision Industry Co.,Ltd
www.ytthjg.com



DIMENSIONS

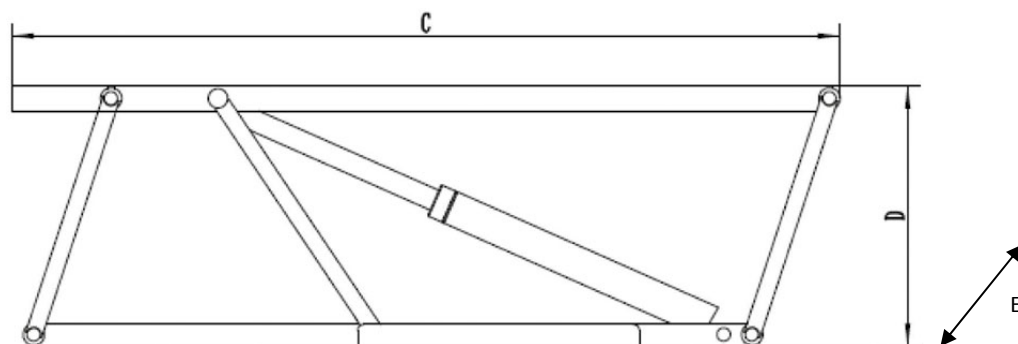


Flat ramp



Hydraulic power pack/

weight 20kg



Max. ramp position / weight 39kg

DIMENSIONS

A	Boom length in min. position	1 746 mm
B	Height min	88 mm
C	Boom length in max. position	1 468 mm
D	Maximum lifting height (with chock)	460 mm
E	Width	315 mm

FEATURES

Maximum Load	2 500 kg	1250Kg/ramp
Safety in case of mechanical fall	YES (2 positions)	
Electrical installation	220 V AC (50/60Hz)	
Hydraulic tank capacity	4L	
Noise level	< 70dA	
Ascent and descent times	20 to 30 seconds	
Protection rating	IP20	

Carried out by the manufacturer according to the following data:

The following elements are present:

- ☐ Technical nameplate on the product
- ☐ Instructions for use
- ☐ Max. load capacity
- ☐ Raise "UP", lower "DN" on the wired control unit.
- ☐ CE identification

Controlled operation and safety:

Pressure relief valve set at 180 bars

Verify:

- ☐ No-load function test over a complete cycle
- ☐ Operation of the mechanical safety devices and the emergency stop button
- ☐ Controls automatically return to initial position
- ☐ No damage to the cylinders, the power supply cable, and the wired remote control cable
- ☐ Tight fastening of all bearing screws
- ☐ Condition of the hydraulic hoses (tightness and tightness of all connections)
- ☐ Full cycle load operation

Serial number:_____

Date:_____

Name:_____

LUXMAIN

Yantai Tonghe Precision Industry Co Ltd

N° 151 Xili Industrieanal Park, Zhifuqu

Country: China

City: Yantai

The builder	Yantai Tonghe Precision Industry Co Ltd N° 151 Xili Industrieanal Park, Zhifuqu China			
Responsible for documentation	Yantai Tonghe Precision Industry Co Ltd			
Hereby declares that the machine named herein	Elevating platform	Type Quick Lift	Reference L520E	Serial No (See page 3)
Corresponds to the safety requirements in the following EC directives	EC Machinery Directive 2006/42/EC		Directive 201165/EU, RoHS2, of 2011.06.08	
EC Certificate of Conformity	EN1493: 2010		EN50581: 2012	
Report No.	185226910101		NGBEC1802310202	
Control body	INSPECCO BELGELENDIRME VE GOZETIM HIZMETLERI A.S ID number 2459		NINGBI QIAOPU ELECTRIC CO.,LTd Xiaoluxia Village, Simen Town, Yuyao City, Zhejiang, China	

This declaration of conformity becomes null and void if the design changes specified in the operating instructions have an effect on the technical data and the intended use of the machine and thus significantly alter the machine!

Mr Wang

C.E.O

Yantai,

15/02/2019

Thank you for choosing GYS! In order to obtain maximum satisfaction from your QUICK LIFT lifting platform and for

your safety, please read these operating instructions carefully before first use and keep them in a safe place for future reference.

BACKGROUND INFORMATION

These operating instructions contain important information for installation in order to ensure proper commissioning and operational safety of the QUICK LIFT. Complying with the documentation reduces risks and extends the life of the product. This manual contains a form to certify regular security checks. Use the "Regular Security Check" form to archive the checks. (It is advisable to make a copy of the form before filling it in for the first time.)

Installation and control:

Safety work and safety checks are reserved exclusively for specially trained persons. These persons are referred to in this documentation as experts and/or authorised persons.

LIABILITY LIMITATIONS

The QUICK LIFT is a manually operated mobile hydraulic lift designed in compliance with standards. All data and advice given in these instructions for use have been collected taking into account these applicable standards and regulations as well as our extensive knowledge and experience.

The manufacturer cannot be held responsible in case of material and physical damage that could lead to death by:



- 1- Non-observance of the instructions for use**
- 2- Improper or dangerous use**
- 3- Employment of unskilled persons**
- 4- Unauthorized processing on QUICK LIFT**
- 5- Insufficient maintenance**

INTENDED INTENDED USE

The QUICK LIFT is designed for the repair of passenger vehicles. It allows the bodybuilder to lift vehicles safely. The maximum load of the QUICK LIFT is 2500 kg.

The QUICK LIFT may only be used by persons who have read and understood the operating instructions.

A safety perimeter must be defined in which no one must be present during the lifting operation (minimum 2m around the vehicle to allow escape if necessary).

The lifting of persons or other objects is not allowed. No one must be inside the vehicle to be lifted.

The QUICK LIFT must be used inside a work room and protected from bad weather (IP 20, wind, rain and negative temperature).

The operating temperature range is between 5°C and 60°C maximum. In case of prolonged storage in a place where the temperature is below 0°C, allow at least 12 hours before use by storing it in the workplace.

Do not use in excessively humid conditions.

This equipment is delivered with a 16 A CEE7/7 type plug and must only be used on a single-phase 220 V (50 - 60 Hz) electrical installation.

Never lift loads on sloping ground (>3°). The floor must be flat and strong enough to prevent the QUICK LIFT from sinking under the weight of the load (35kg/cm²). Under no circumstances should the Quick Lift be placed on an inspection hatch on the floor.

It is forbidden to use the QUICK LIFT on a boat/vessel (stability problem).

Thoroughly clean the supporting surface of the vehicle and the rubber pads of the QUICK LIFT before each use. Remove all grease and oil stains that could cause the vehicle to slip.

Work underneath the vehicle during ascent and descent is not permitted.

Vehicles should only be lifted at the lifting points recommended by the car manufacturers. Make sure that the QUICK

LIFT does not come into contact with areas close to the airbag activation sensors during and after the climb.

Do not place the rubber spacers on an area with plastic lining.

Take care of electrical cables and hydraulic hoses, do not crush them or step on them.

In the event of a violent impact on the load-bearing and/or structural elements of the QUICK LIFT, it is imperative to take the product out of service and contact your dealer or the manufacturer in order to assess the damage before putting it back into service.

In case of doubt about the strength of the vehicle structure (presence of rust) - Do not lift the vehicle.

Intended use also includes familiarising yourself with these operating instructions and complying with all the instructions contained therein, in particular the safety instructions.

Enforce safety and risk prevention standards in the country's workplaces.

In addition, this also includes the obligation to carry out all regular inter-wall inspection and maintenance work.

In the event of improper use of the lift, the operational safety of the QUICK LIFT is not guaranteed.

Damage to persons and property, also on vehicles, caused by improper use of the device is in no way the responsibility of the manufacturer, but of the operator handling the QUICK LIFT.

QUICK LIFT must not be used in a potentially explosive atmosphere and it is not recommended to work next to a heat source.

It is forbidden to use spare parts other than original parts certified by the manufacturer.

Make sure that your QUICK LIFT is in one of the two locked positions before you start working around or underneath.

At the end of a work session, return the vehicle to the ground to avoid operating the QUICK LIFT with a full load for a long period of time.

PACKAGING AND UNLOADING

The QUICK LIFT is packed in two parcels on a pallet. In a pocket on the outside of the package you will find the QUICK LIFT operating and testing instructions. The larger package contains the two booms and accessories and in the smaller package is the hydraulic power pack. On delivery, check for external transport damage. In case of visible damage, leave the goods and packaging as they are. Do not use the goods and contact your dealer directly. Failing this, a reservation must be made to the carrier. Unloading is done by means of a pallet truck or a forklift truck.

INDIVIDUAL COVERAGE

The operator must be equipped in accordance with the occupational risk prevention standards applicable in his country and must adopt all necessary measures to maintain safety at his workstation. During manoeuvres, the operator must ensure his own safety and that of the people and objects around him. The operator must take into consideration all the recommendations quoted in this manual.



Hydraulic fluid is dangerous if splashed in the eyes or if it comes into contact with blood. In this case, contact your doctor immediately. Never reach over your hand to check for a hydraulic leak: risk of cut and contamination in the bloodstream that could lead to death.

START UP

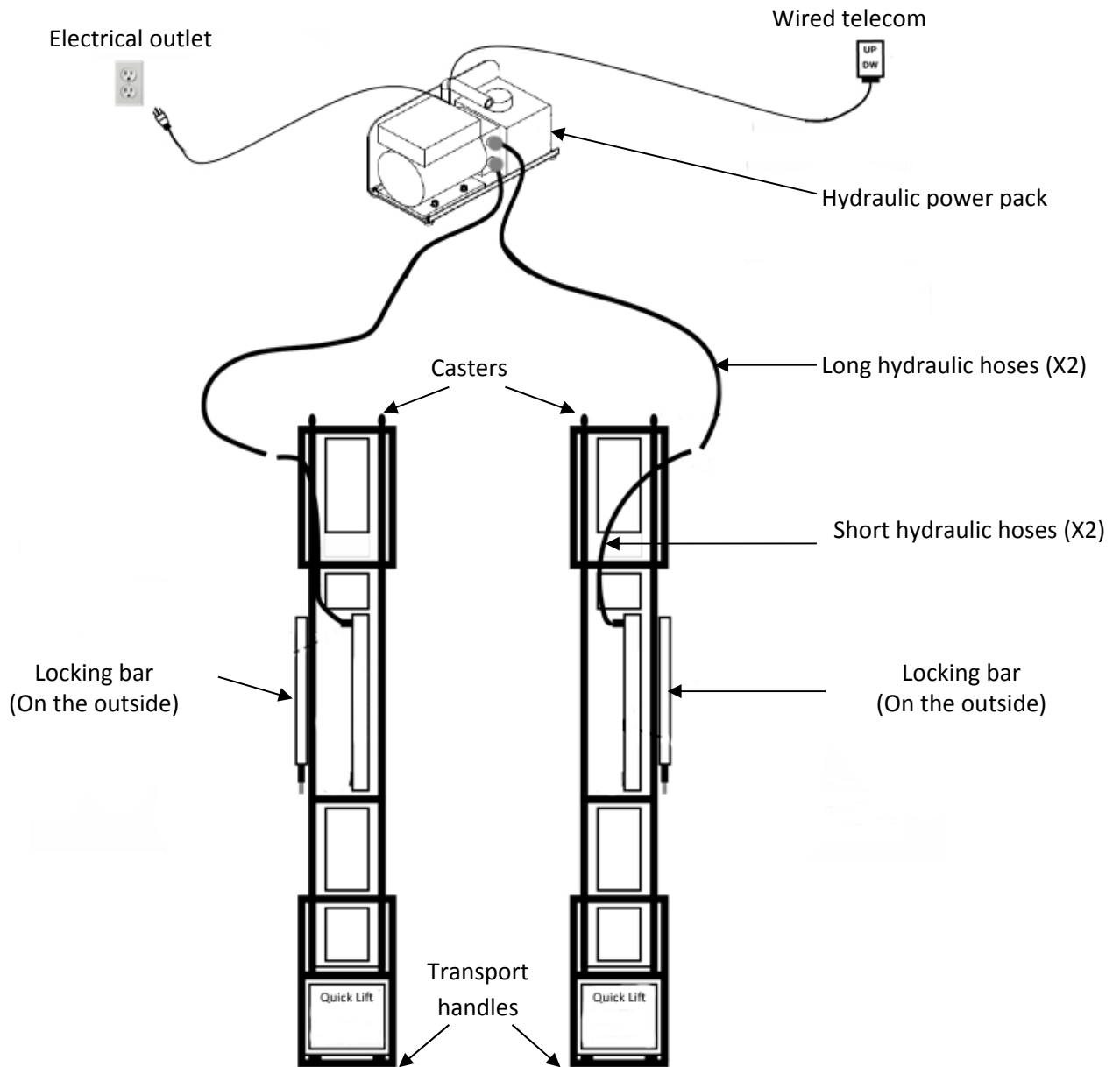


Make sure you have the necessary protection: pair of glasses, safety shoes and gloves.

Step 1: Lay the two booms on the ground parallel by aligning the hydraulic hoses.



The ramps are very similar but they are not interchangeable.. The mechanical safety must always be on the outside and the ramps pointing in the same direction.



Castors are provided on the QUICK LIFT to move the ramps easily and to allow them to be properly positioned under the vehicle. Use the handles to carry the ramps one by one more easily.

Step 2: Place the hydraulic power pack at least 2 meters away from the ramps without connecting it electrically. Attach the long hydraulic hoses to the hydraulic power pack. Do not overtighten, the sealing is done automatically with the conical seat of the connections.



Step 3: The tank of the hydraulic unit is empty. It must be filled with hydraulic oil or automatic transmission fluid before starting operation. Approved fluids are general purpose hydraulic oils or synthetic automatic transmission oils with a viscosity index of 32 cSt at 40°C.

Remove the fuel filler cap and fill it with up to 3.5L of oil through a clean funnel. Check the level and adjust if necessary.

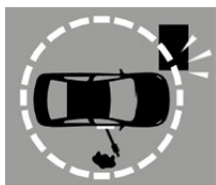


Step 4: Connect the hydraulic power pack to both booms using the quick couplings.



Step 5: Check that the electrical system is equipped with a 16 A circuit breaker. Connect the hydraulic unit electrically to a 220V single-phase socket, your QUICK LIFT is ready to operate.

SAFETY AREA

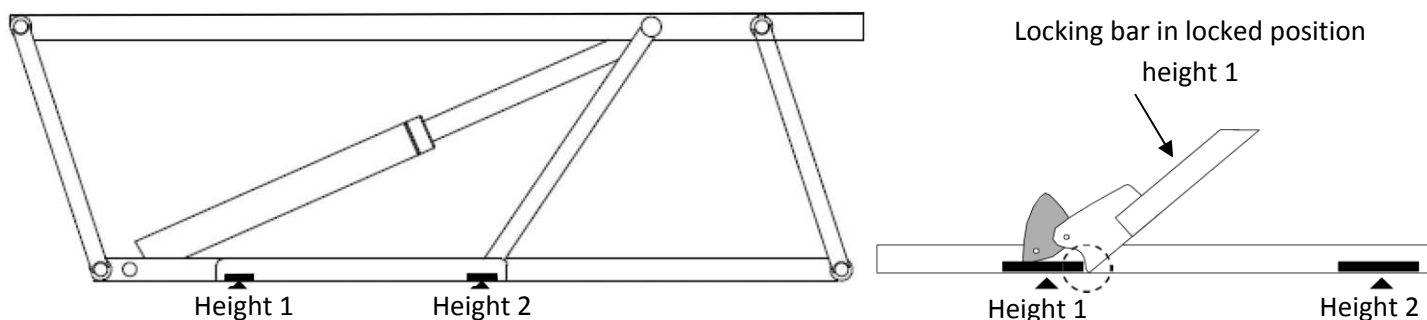


To achieve optimum safety, it is recommended to define an area in which other objects or walls will be at a certain distance (2m minimum). All descent, exit and parking manoeuvres must be carried out with the best possible attention from the operator. Nobody must stand in the safety area. In order to guarantee the operator's safety, the control box must be located at a distance that allows an escape route in case of emergency.

INSTALLATION

Once the tool has been removed from its packaging, assembled and positioned on the ground, perform a no-load test to check the QUICK LIFT's general operation.

There are two positions for locking the height of the QUICK LIFT, which we will call height 1 and height 2 (max. height) in the rest of the manual.



First of all, the QUICK LIFT must never be lifted unladen (without load) to the maximum stop. The ramps could get stuck and never come down again. They are designed to support a load during lifting. If this happens to you, please refer to the paragraph "Abnormalities, Causes, Remedies".



Make sure you have the necessary protection: pair of glasses, safety shoes and gloves.

1/ IDLE START:

Connect the power cord of the hydraulic unit to a 220 V single-phase socket.

2/ CHECKING THE AMOUNT: use the wired remote control

- a. Press the "UP" button until the QUICK LIFT rises a few centimetres (5 to 10 cm max.).

- b. Visually check all hydraulic connections (cylinders, hoses, couplings, power pack) for hydraulic leakage. If you notice a slight leak, tighten the connection until there is no more leakage. If you see a large leak, immediately press "DN" (down) until the QUICK LIFT is lowered to the ground. Tighten the connection firmly and repeat the test until there is no more leakage.



It is advisable to place a cardboard box between the floor and the QUICK LIFT and even at the level of the quick connections in order to identify possible leaks more easily during the first start-up.

Be meticulous when applying a sealing tab or Teflon to hydraulic connections. Do not pollute or clog the hydraulic system. There are filters that could become clogged and prevent the QUICK LIFT from working properly.

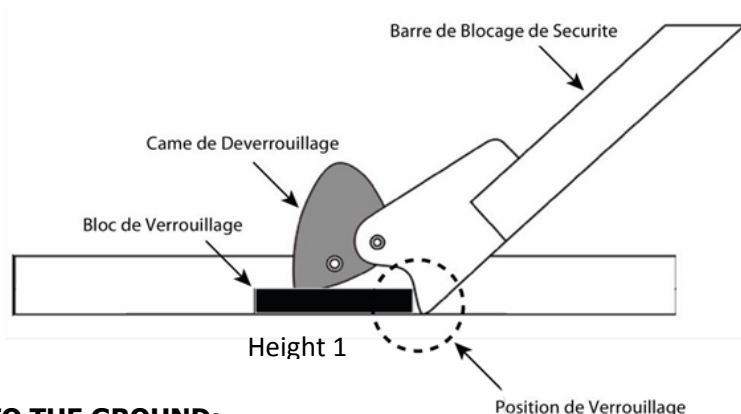
3/ CHECKING THE SAFETY SYSTEM AT HEIGHT 1:

Press "UP" again and move a few centimetres higher than height 1 so that the safety devices of both ramps protrude a few centimetres above the locking block at height 1.



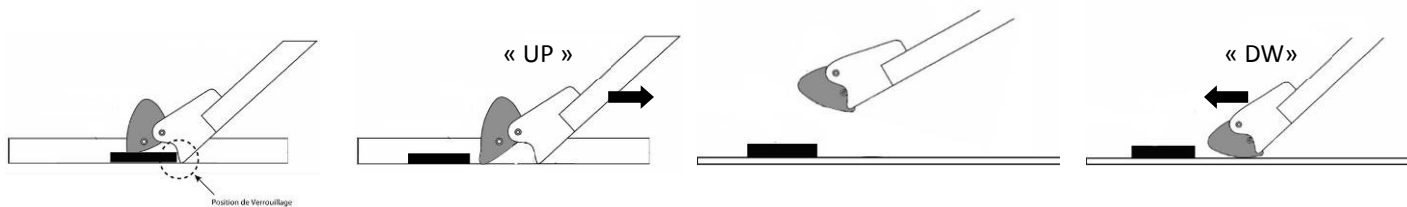
When empty, there may be a greater offset in the height of the ramps in relation to each other and therefore in the passage of the locking bars on the blocks. This is normal. On load, the ramps will be synchronized and the offset will be corrected.

Pressing "DN" (down) will lower the ramps until both locking levers are in the locked position as shown in the diagram below.



4/ DOWN THE RAMPS TO THE GROUND:

- a. Press "UP" to raise the QUICK LIFT by 2-3cm and then raise the safety locking bars with your hand or foot so that the unlocking cam can come into contact with the ground when it is in its resting position.
- b. Make sure both release cams are resting on the ground before pressing "DN" (down).
- c. Press "DN" (down) until QUICK LIFT has returned to the initial position.



5/ PURGE THE WORMS:



Make sure you have the necessary protection: pair of glasses, safety shoes and gloves.

There may be air in the hoses or cylinders before first use. Unlike hydraulic oil, air is compressible. You might get the impression that the ramps work like a shock absorber. To expel the air, it is necessary to bleed the circuit through the cylinders.

Turn over the 2 ramps of your QUICK LIFT as shown in the photo opposite, taking care not to injure yourself or get your fingers caught in the mechanical structure (carry out this operation with 2 people if necessary) and follow the procedure for



purging the jacks one by one below.

- Slightly loosen the bleed screw at the end of the hydraulic cylinder with a hexagon key.
- Be careful to keep your hands away from pinch points.
- Briefly press the "UP" button on the remote control. Air and oil will start to come out (use a container to collect the oil and place a cardboard box on the ground to avoid polluting the area).
- When you see that the oil coming out of the cylinder is free of air bubbles, you can tighten the screw to close the cylinder tightly. Do not over-tighten, the copper ring is sufficient for sealing.
- Proceed in the same way on the second ramp.

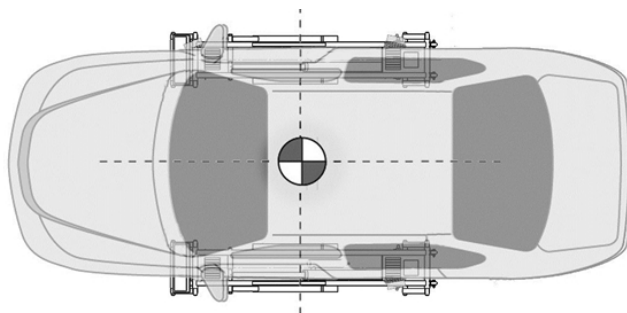
OPERATING INSTRUCTIONS



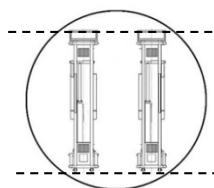
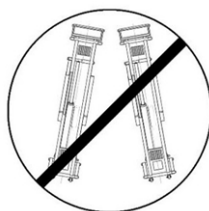
Before lifting a vehicle, make sure the handbrake is released and the vehicle is left in neutral. The wheels on take-off from the ground need to be free. Otherwise, there is a risk that the load will slip on the rubber pads and lead to a dangerous and unstable situation.

Once the tool is correctly positioned under the vehicle, certain rules must be observed:

- Make sure that no one or bulky objects are in the safety zone.
- Check that the ramps are positioned at the pick-up points given by the car manufacturers. In some cases it will always be better to use a front underneath socket rather than a rear socket, which will be lighter unless the engine is at the rear of the vehicle. If in doubt, seek specialist advice.
- Do not lift any loads directly with the ramps. Always use the supplied rubber spacers in the trays provided for this purpose.
- The centre of gravity of the vehicle to be lifted shall be midway between the rubber chocks and centred between the ramps.



- It is important to ensure that the ramps are parallel to each other and aligned at the front and rear before lifting the vehicle. Failure to perform this check could result in vehicle instability and lead to a dangerous situation.



There are two special cases when lifting a vehicle with QUICK LIFT, you should be aware of this:

Case 1:

Do not deploy both ramps at full height when empty. One way to become familiar with the use of your QUICK LIFT is to raise and lower the ramps several times without putting a load on them (without a vehicle). The frames can lock at full height when there is no load and if you force the 2 safety bars beyond height 2 simultaneously. If this happens to you, contact your dealer or the manufacturer.

Case 2:

Do not attempt to lift a vehicle if there is no deployment space above the ramps. Your QUICK LIFT needs a space of a few centimetres between the wheel chocks and your car so that the pressure gradually increases and lifts the vehicle.

She won't be able to lift a vehicle in some cases. It's not a malfunction. This can be problematic if, for example, you lift a vehicle and once raised you remove the wheels and return the QUICK LIFT to its original position (on the ground). When you want to pull the vehicle up, the QUICK LIFT will not be able to do so. In this case contact your dealer or the manufacturer for assistance.

Please never go below height 1 if the vehicle has the wheels removed. And make sure that both locking bars are locked if the vehicle is to remain in this position for a long time.

Ramps in lifting position:

When raising and lowering vehicles, always leave your ramps in the locked position using the locking bars. Not all lifts on the market, including the QUICK LIFT, are designed to hold their full load unless they are placed in the locked position.

For deploying Quick Lift ramps and lifting a vehicle:

- a. Verify that the vehicle's hand brake is off and that there is no gear engaged before deploying the ramps (please refer to the vehicle manual in some cases for the procedure).
- b. Insert the rubber spacers on the ramps and in the areas provided for this purpose.
- c. Press and hold the "UP" button on the remote control. The ramps are starting to deploy.
- d. Just before the rubber chocks make contact with the vehicle chassis, release the "UP" button.
- e. Check the areas where the rubber chocks will come into contact with the vehicle chassis. If necessary, adjust the rubber lifting wedges at the undercarriage pick-up points (manufacturer's recommendation).
- f. Press the "UP" button on the wired control. When the vehicle leaves the ground, do not stop the deployment of the ramps until the first locking position is reached. Never leave a vehicle elevated unless both safety bars are in the locked position.
- g. Test the stability of the vehicle: if this is not the case, return the vehicle to the ground immediately by pressing "DN" (descend) and check the cause before raising the vehicle.
- h. Raise the vehicle to either Lock Height 1 or Lock Height 2. When you have reached the desired locking position, press "DN" (down) on the remote control to lower and bring both ramps to the locked position.
- i. Make sure that both ramps are in the locked position and that all rubber chocks are in contact with the vehicle.
- j. Once these 2 points have been checked, carry out a stability test to check that the car is stable.
- k. It is after these 3 tests that you will be able to work safely around and under the vehicle.



The manufacturer will not assume any civil or criminal liability for damage caused to persons if the operator does not comply with the above recommendations.



Never stand around or under the QUICK LIFT if you have to remove a heavy object from the vehicle (engine, gearbox...). The vehicle could become unbalanced and cause the QUICK LIFT to tip over. Do not take any risks, always be outside the safety zone (minimum 2m) during an ascent or descent manoeuvre.

Descent:



Before carrying out the lowering manoeuvre, check that there are no persons or obstacles in the safety area. Also check that there are no obstacles in the booms, that the hydraulic hoses and the remote control cable do not obstruct the booms'

descent. Position yourself so that you have an overview of the situation and can act quickly in the event of a problem.

Position yourself outside the security perimeter and press the "UP" button on the wired remote control so as to raise the ramps by 2-3 cm. Without going under the vehicle, with one hand or foot raise the locking bars so that the 2 cams rest on the ground.

Press "DN" (down) until the ramps return to the initial position. Please make sure that the cams slide smoothly through each passage of the locking blocks. Otherwise, pull the vehicle up by pressing "UP" to catch up and until you can put the release cam back on the ground.



The buttons on the remote control always return to their initial position when the operator does not press them to ensure that all manoeuvres are voluntary. After an operation with the remote control, it is strongly recommended to put it in its case which can be fixed to a fixed support (not accessible by children).

CONTROLS AND MAINTENANCE

Inspections and maintenance work must be carried out by authorised personnel at the maintenance intervals specified in this manual. In order to guarantee a long service life and proper use of the QUICK LIFT, the following points must be observed.

- Turn off the power to your Quick Lift before performing any maintenance.
- Only original spare parts must be used "Spare parts"»
- The recommended maintenance intervals must be adhered to "Maintenance table".
- For maintenance work that is not shown or indicated in the operating instructions, contact your distributor and/or the manufacturer.



Clean the QUICK LIFT at least once a week to remove all dust and dirt that could degrade the proper functioning of the product in the long term. Use self-cleaning cloths. Do not use any water nor flammable or corrosive liquids.

Visually inspect your QUICK LIFT before each use. Do not use it if you detect damage or severe wear and tear.

Carry out maintenance work only when the QUICK LIFT is lifted, locked and unloaded.

MAINTENANCE TABLE

Maintenance intervals	Tasks	Remarks
Monthly	Check, clean and lubricate all moving parts, especially the pins and sliding surfaces of the locking bars. Check the condition of the rubber spacers and clean them. Check the locking bars, the locking cams and the condition of the pins. Check the condition of the hydraulic hoses, the cable of the wired remote control and the power supply cable. Check the hydraulic oil level	Refer to "Check and lubrication point". Replace if necessary (Refer to the exploded view "Spare parts") Complete if necessary.
Annual	"Regular security check"	For the test log, see "Regular security check"
Every 5 years of service	Replace the complete set of hydraulic hoses and the oil in the hydraulic system.	Refer to the exploded view. «Spare parts»

Maintenance must be carried out at regular intervals.

Use the "Regular Security Check" form and the Maintenance Log to archive regular and annual checks.

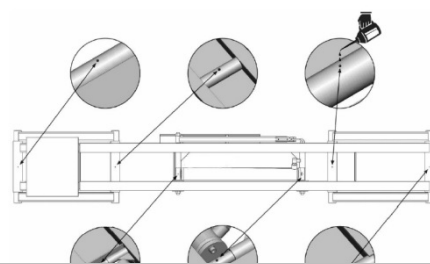
Make a copy of the QUICK LIFT status report and attach it to the operating instructions.

Regular safety checks must be carried out by an authorised person. It is recommended to perform maintenance simultaneously.

CHECK POINT AND LUBRICATION

All hinge pins are provided with a small hole for lubrication with SAE 90 type oil (fluid oil). The 6 lubrication points per boom are shown opposite.

Check that the axle nuts are correctly tightened (the nuts are fitted with a brake to prevent loosening).



TROUBLESHOOTING, CAUSES, SOLUTIONS



Hydraulic Power System Warning: Failure to follow these precautions can result in serious injury and, in rare cases, death.

All connectors must be properly assembled together before using the Quick Lift or applying pressure.

Never attempt to connect or disconnect the couplers while the equipment is in operation or if the hydraulic system is under pressure.

Wear protective equipment (goggles, gloves and safety shoes) when handling the Quick Lift.

If hydraulic fluid comes into contact with the eyes, enters the bloodstream or is swallowed, consult a doctor immediately.

Take every precaution to prevent dust or other debris from entering the hydraulic system.

The table below shows the anomalies that can be observed when using the QUICK LIFT. If the problem is not listed in the table below, stop using the tool and immediately contact your dealer or the manufacturer for instructions.

TROUBLESHOOTING	CAUSES
Ramps deploy abnormally or do not descend well.	Check that there are no hydraulic leaks or that one of the hoses is not pinched or crushed. Check that the solenoid valve is active (red knob must be in the down position). Check that there is sufficient hydraulic fluid in the tank. Check that the generating set is working (motor noise). Bleed the cylinders one by one.
The ramps are in the maximum position (unladen, without vehicle) and do not descend.	Contact your dealer or the manufacturer. You need assistance.
The ramps do not deploy from their low position.	Check that the weight of the vehicle is not > 2500kg. Check that your vehicle has its wheels There must be a minimum space of 2 to 3 cm between the vehicle's gripping points and the rubber chocks. For a 2500kg vehicle it will take several centimetres (about ten).
The ramps go down slowly without using the wired remote control.	Check that the booms are in the locked position. Never leave the ramps loaded without first locking the safety bars. Check that the mechanical control (red knob) of the solenoid valve is activated. It must be in the down position. If it is in high position it

means that the circuit is open and the oil automatically returns to the tank (there is no pressure in the circuit)..

DEACTIVATION

Any equipment that appears damaged in any way, does not operate normally, or has missing parts should be taken out of service immediately by removing the power cord from the electrical outlet. Do not use the unit if you notice parts are broken, bent or cracked.

START-UP

The QUICK LIFT must be disposed of in accordance with the current environmental and disposal guidelines of the country in which it is located.

WARRANTY CONDITIONS

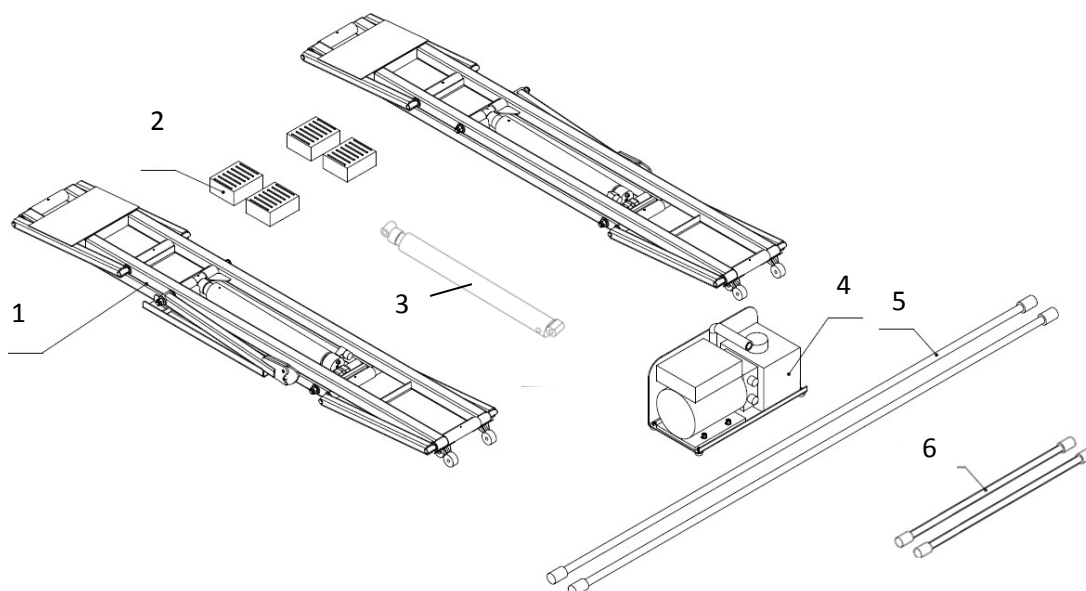
The warranty covers any defect or manufacturing defect for 2 years from the date of purchase (parts and labor). - The warranty does not cover incidents due to misuse, fall, disassembly or other damage due to transportation. The warranty does not cover normal wear and tear of parts if maintenance is not kept up to date. Only spare parts from the manufacturer may be used to repair the QUICK LIFT.

The characteristics of maximum load appear on the labels stuck on the product. The user must not remove, dirty or deface these labels. The warranty will be void if these labels are falsified. Contact the retailer or manufacturer to get new ones if needed.

In the event of a malfunction, return the unit to your dealer, enclosing:

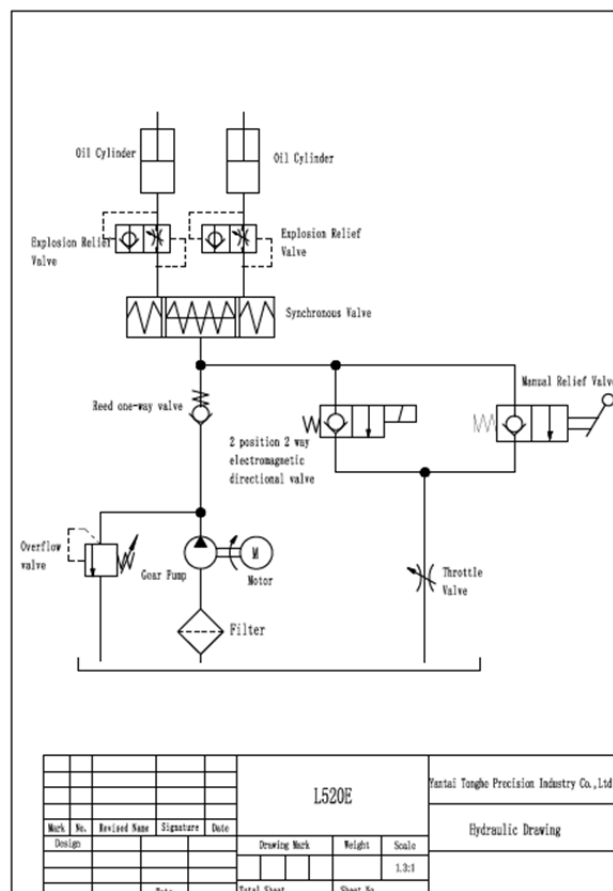
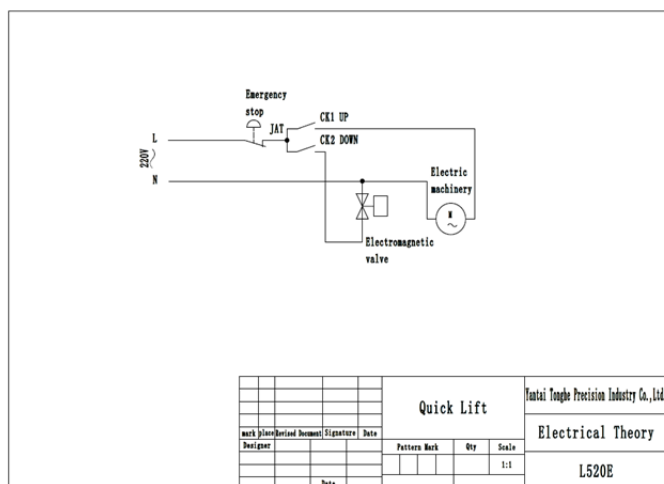
- a dated proof of purchase (till receipt, invoice...)
- a note explaining the malfunction.
- Copy of "Regular Security Checks"

SPARE PARTS



1	Complete lifting frame
2	Rubber pads x4
3	Cylinder
4	Hydraulic power pack 220V with wired remote control
5	flexible long hydraulique (X2)

ELECTRIC CIRCUIT HYDRAULIC CIRCUIT



REGULAR SECURITY CHECK

Description of the product	QUICK LIFT L520E
Serial number	

Verification phase	OK	NOT OK	Note
Technical table on the QUICK LIFT present (on hydraulic power pack)			
Max. load capacity 2500kg present on the 2 ramps			
Up "UP" and down "DN" signal present			
Operating instructions (original) present			
Tightening of nuts on all axes			
Condition of hydraulic hoses and couplings			
Status of the wired remote control and its cord			
The buttons on the wired remote control return to the initial position automatically and charging stops.			
The emergency stop button is functional.			

Condition of the load-bearing construction (mechanical structure)			
Status of the locking blocks (height 1 and height 2)			
Status of locking bars, cams and pins			
Condition of the jacks (leaks, rust...)			
Condition of the rubber chocks (and 4x4 option)			
Condition of the power cord of the hydraulic power pack			
General condition of the hydraulic power pack			
Functional test of the lifting platform with vehicle			

Control result	
	Commissioning is not allowed
	No anomalies: commissioning granted

Safety check carried out on:

.....

Name and address of the authorised person:

.....

Signature of the authorised person

MAINTENANCE LOG

.....

.....

.....

.....

.....

.....

.....

.....

.....

.....

.....

This image shows a single sheet of white paper with horizontal blue or grey ruling lines. The lines are evenly spaced and run across the width of the page. There are no margins, text, or other markings on the paper.

Importer France

GYS FRANCE

1, rue de la Croix
des Landes CS
54159
53941 SAINT-BERTHEVIN
Cedex France