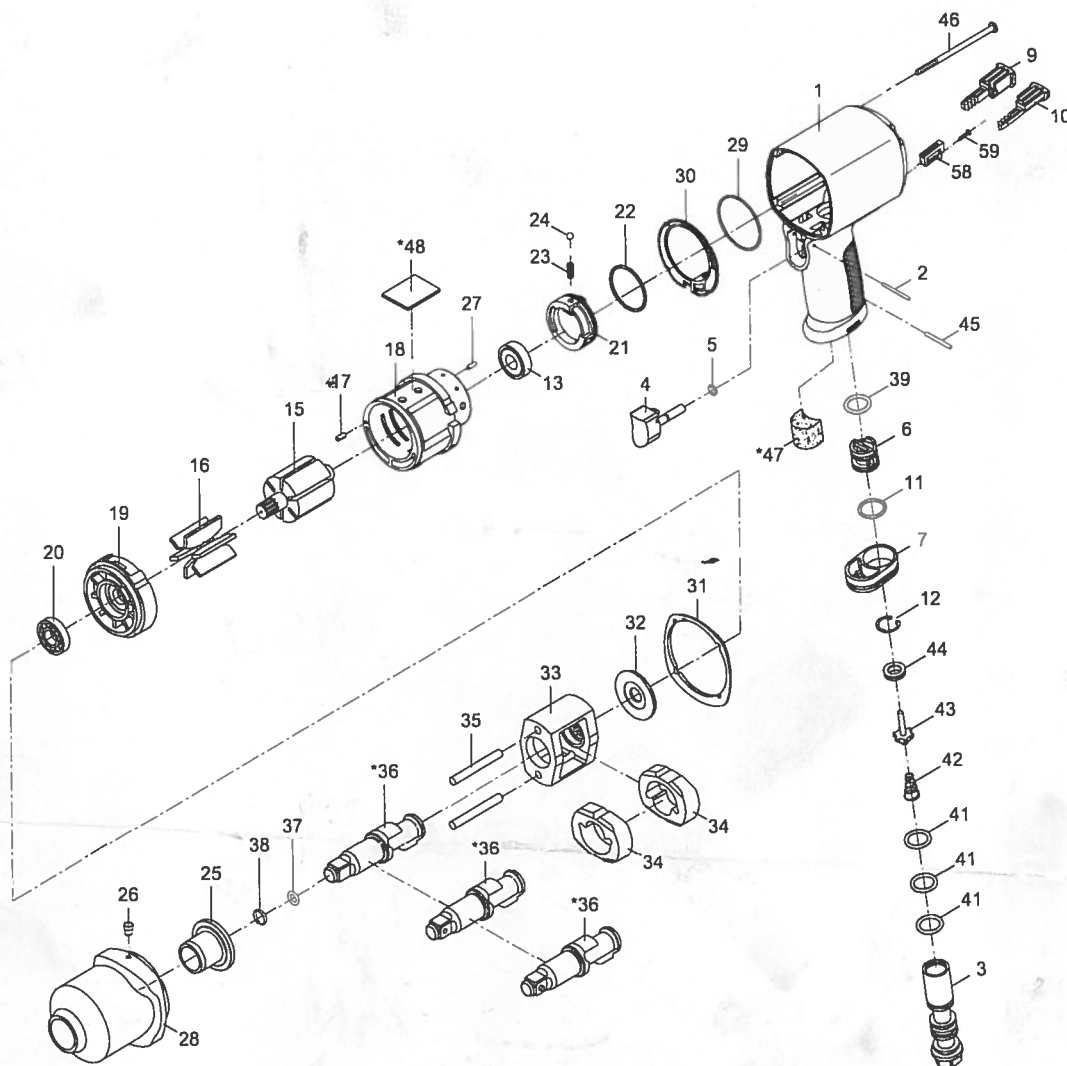


1/2" PROFESSIONAL IMPACT WRENCH



Index No.	Parts No.	Description	Index No.	Parts No.	Description
1	43-4134P01	Motor Housing	28	43-413428	Hammer Case
2	73102	Spring Pin (2x24)	29	OR04300105	O-Ring (43x1.5)
3	43-413403	Air Inlet	30	43-413434	Gasket
4	43-413404	Trigger	31	43-413435	Gasket
5	OR00400100	O-Ring (4x1)	32	43-403327	Washer
6	43-413406	Reverse Valve	33	43-403308	Hammer Cage
7	41-401207	Exhaust Diffuser	34	43-403111	Hammer (2)
9	43-413410R	Forward Button	35	43-403117	Hammer Pin (2)
10	43-413410L	Reverse Button		43-403102-11	Anvil (R-Type 1/2")
11	OR01705200	O-Ring (17.5x2)	*36	43-403102-12	Anvil (RH-Type 1/2")
12	RTW-17	Retaining Ring (RTW-17)		43-403102-13	Anvil (M-Type 1/2")
13	060313	Ball Bearing (6001zz)	37	40305	O-Ring (6.5x2)
15	43-413415	Rotor	38	40303	Retaining Ring
16	43-403816	Rotor Blade (6)	39	OR01505275	O-Ring (15.5x2.75)
17	70117-13	Spring Pin (2.5x5)	41	OR01505206	O-Ring (3) (15.54x2.62)
18	43-413418	Cylinder	42	43-413447	Valve Spring
19	43-403319	Front End Plate	43	43-403348	Valve Stem
20	072021	Ball Bearing (EE4)	44	43-413445	Rubber Spacer
21	43-413421	Air Regulator	45	73402	Spring Pin (2.5x22)
22	OR03407108	O-Ring (34.65x1.78)	46	43-403330	Screw (4) (M4x90)
23	43-403323	Spring	*47	75-725153	Muffler Material
24	5K-3011B25	Steel Ball (9/64")	*48	43-403351	Muffler Material
25	43-403325	Anvil Bushing	58	43-413461	Partition
26	41-401254	Oil Cap (1/8")	59	43-413450	Screw (TS2.2x10)
27	51217	Spring Pin (2x4)			

* Optional Parts

43-4134P-0001