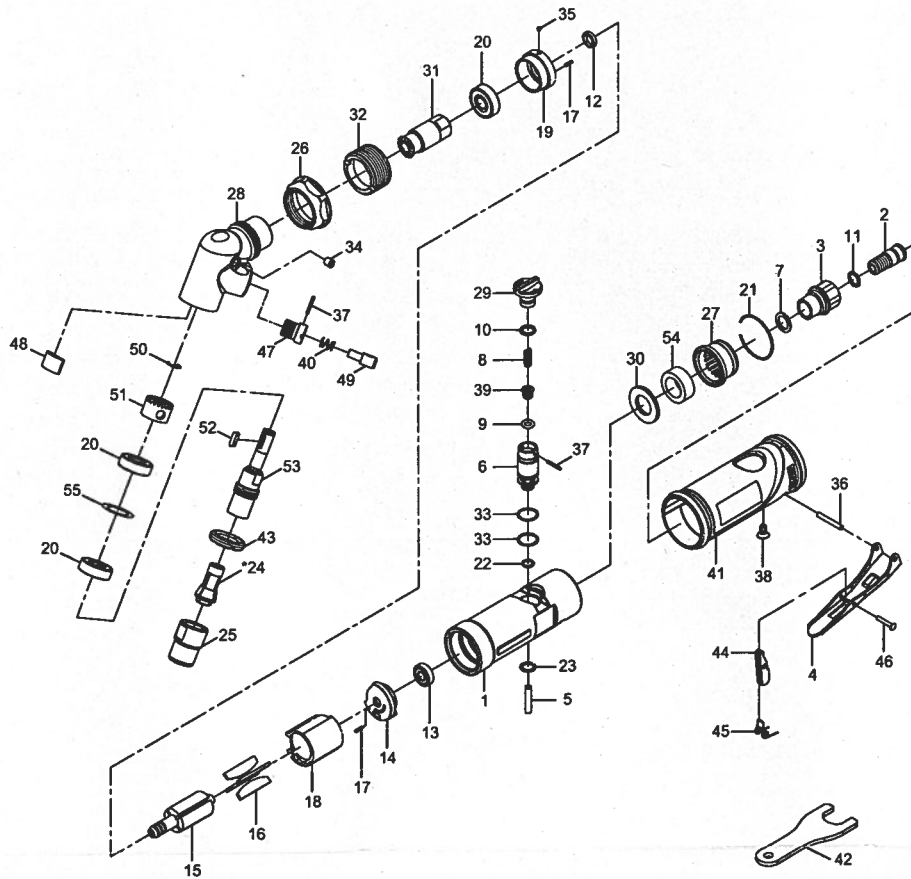


120° ANGLE DIE GRINDER



Index No.	Parts No.	Description	Index No.	Parts No.	Description
1	537001	Housing	27	534011	Deflector
2	33-301341	Fixed Shaft	28	554028	Head
3	522203-21	Air Inlet	29	52-522738	Regulator
4	537004	Throttle Lever	30	522250	Damping Material
5	534005	Valve Shaft	31	52422	Bevel Gear
6	537006	Valve	32	524023	Front Coupling
7	522243	Washer	33	52236	O-Ring (2) (10.5x1)
8	522208	Spring	34	56237	Oil Cap
9	30107	O-Ring (3.8x1.9)	35	52245	Steel Ball (3/32")
10	40333-12	O-Ring (6x1.5)	36	50102	Spring Pin (3x22L)
11	OR00705105	O-Ring (7.5x1.5)	37	SP01051200	Spring Pin (2) (1.5x12L)
12	52212	Rotor Spacer	38	5G-321V30	Screw (M4x8L)
13	052213	Ball Bearing (696zz)	39	522240	Throttle Valve
14	52214	Rear End Plate	40	527034	Spring
15	534015	Rotor	41	537052	Grip
16	534016	Vane (4)	42	56227	Spanner (17mm)
17	30117	Spring Pin (2) (1.5x6L)	43	52231	Clamp Nut
18	534018	Cylinder	44	537002	Locker
19	52219	Front End Plate	45	5D-6415S07	Spring
20	030120	Ball Bearing (3) (608zz)	46	5G-360V06	Rivet
21	534027	Retaining Ring	47	527013	Button Seat
22	OR00600100	O-Ring (6x1)	48	554031	Oil Felt
23	ISTW-8	Inverted Retaining Ring (ISTW-8)	49	527012	Spindle Lock Button
*24	51224-11	Collet (1/4")	50	524212	Crescent Ring (5103-31)
	51224-12	Collet (1/8")	51	554030	Bevel Gear
	51224-13	Collet (6mm)	52	61017	Key (3x10L)
	51224-14	Collet (3mm)	53	554033	Spindle
25	52225-12	Collet Nut	54	534037	Damping Material
26	524026	Front Cap	55	557044	Washer

*Optional parts

5570-0001