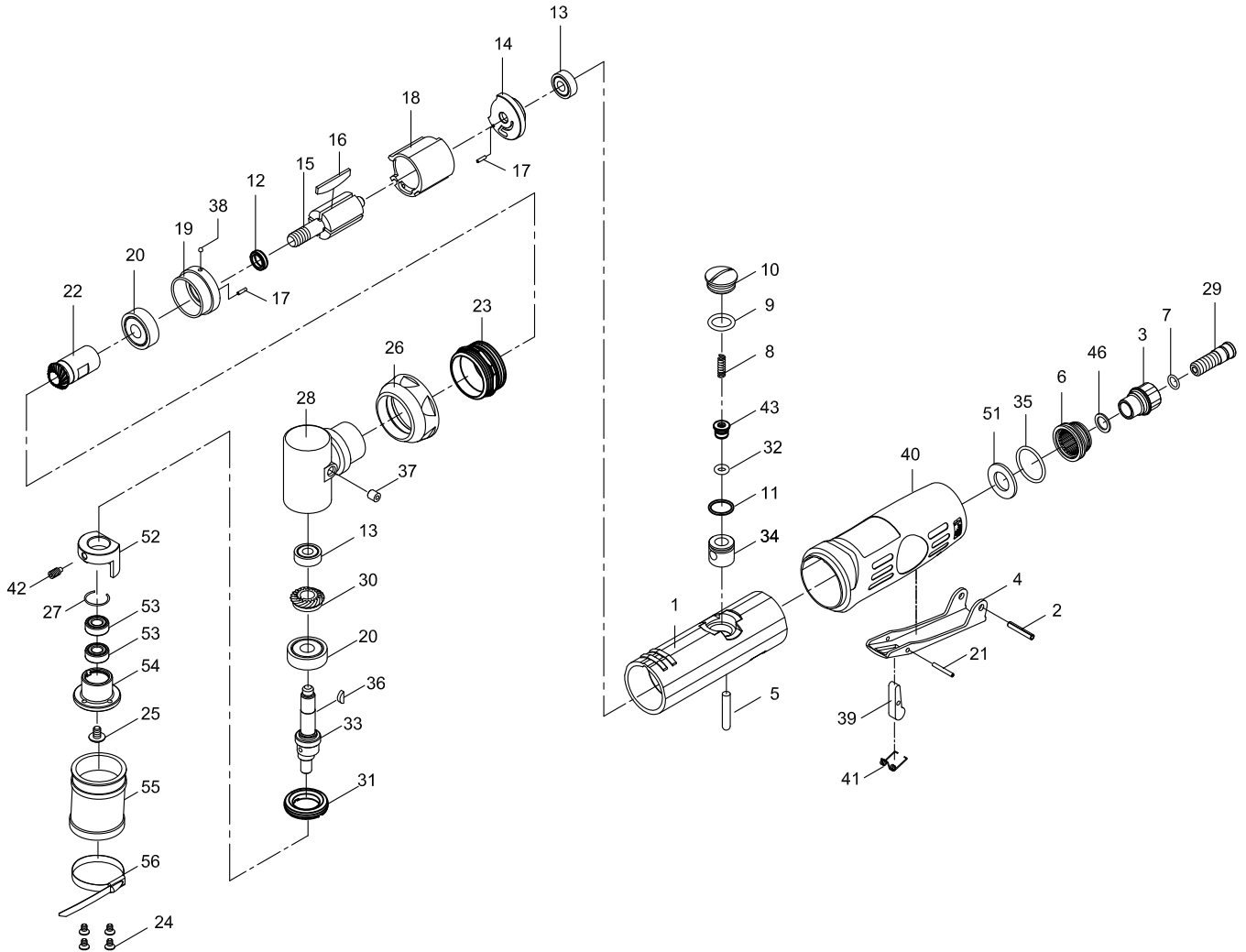


# 90° RIGHT ANGLE SANDER



Index No.	Parts No.	Description	Index No.	Parts No.	Description
1	522201	Motor Housing	26	522226	Front Cap
2	40337	Lever Pin (3x18L)	27	60-523520	Ring
3	522203-21	Air Inlet	28	56228	Head
4	52-522504	Throttle Lever	29	60-523541	Fixed Shaft
5	52-522505	Valve Shaft	30	52230	Bevel Gear
6	52206	Deflector	31	52231	Lock Ring
7	OR00705105	O-Ring (7.5x1.5)	32	30107	O-Ring (3.8x1.9)
8	522208	Spring	33	60-523524	Balancer Shaft
9	70109	O-Ring (9.8x1.9)	34	522236	Bushing
10	52-522510	Valve Screw	35	52235	O-Ring (22.8x2)
11	52236	O-Ring (10.5x1)	36	52232	Key
12	52212	Rotor Spacer	37	56237	Oil Cap (3/16")
13	052213	Ball Bearing (2) (696ZZ)	38	52245	Steel Ball (3/32")
14	52214	Rear End Plate	39	51540-228	Safety Bar
15	52215	Rotor	40	52-522553	Grip
16	52216	Vane (4)	41	522212	Spring
17	30117	Spring Pin (2) (1.5x6)	42	60-523522	Screw (M4x8L)
18	52218	Cylinder	43	522240	Throttle Valve
19	52219	Front End Plate	46	522243	Washer
20	030120	Ball Bearing (2) (608ZZ)	51	522250	Damping Material
21	522220	Spring Pin (2x15L)	52	60-523523	Balancer
22	52222	Pinion Gear	53	062045-12	Ball Bearing(2) (686ZZ)
23	522223	Front Coupling	54	60-523521	Driving Guard
24	60-523535	Screw(4) (M3x5L)	55	60-523525	Shroud
25	60-523526	Screw (M4x6L)	56	60-523527	Clip