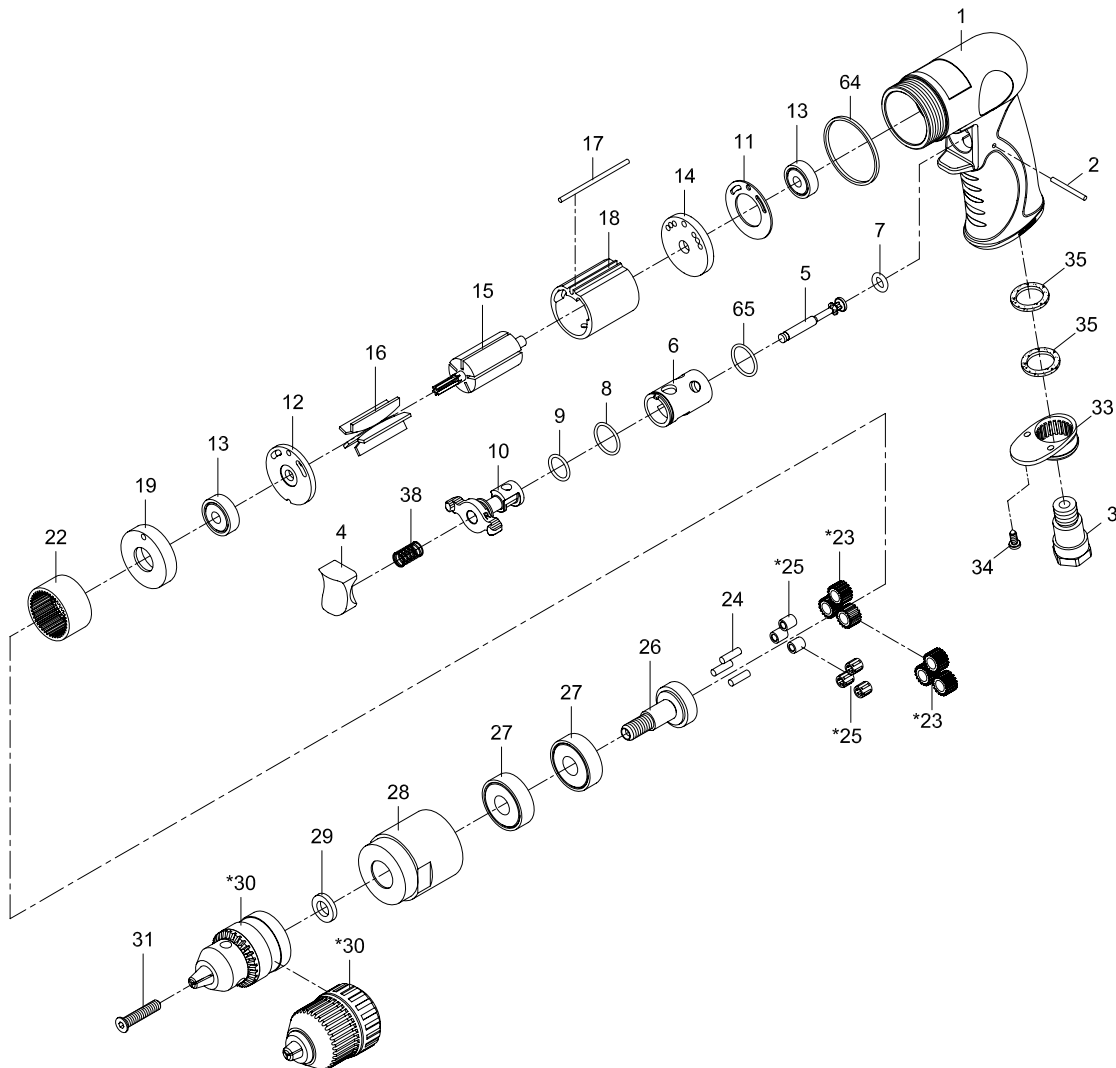


3/8" REVERSIBLE DRILL



Index No.	Parts No.	Description	Index No.	Parts No.	Description
1	75-7253P01	Motor Housing	22	80222	Internal Gear
2	822202	Pin (2.5x26.8)	*23	80223-11	Planet Gear (3)
3	75-725303	Air Inlet		80223-14	Planet Gear (3)
4	75-725304	Trigger	24	30124	Pin (3) (4x13.8)
5	75-725305	Valve Stem	*25	80225	Bushing (3)
6	75-725306	Valve Bushing		080245	Needle Bearing (3) (4x7x8)
7	72807-12	O-Ring (4.5x2.5)	26	70526	Work Spindle
8	795820	O-Ring (15.5x1.5)	27	080227	Ball Bearing (2) (6201z)
9	80209	O-Ring (12x1.6)	28	70534	Clamp Nut
10	75-725310	Reverse Lever	29	70133	Washer
11	80211	Motor Gasket	*30	10035-11	Key Chuck (3/8")
12	80214	End Plate		10035-12	Keyless Chuck (3/8")
13	030113	Ball Bearing (2) (626zz)	31	70530	Screw (M5x25)
14	75-725314	Rear End Plate	33	70110-21	Exhaust Diffuser
15	80215-12	Rotor	34	40309	Screw (2) (TS2.9)
16	80216	Rotor Blade (5)	35	75-725350	Damping Material (2)
17	75-725317	Pin (2.5x57)	38	82208	Valve Spring
18	80218-22	Cylinder	64	75-725351	Decoration Ring
19	80219	Front End Plate	65	72009	O-Ring (15.7x1.7)

* Optional Parts

75-7253P-0001