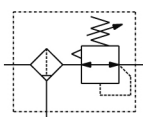


AW20(*)-B to AW60(*)-B, Filter Regulator & Filter Regulator w/Backflow Function AW40-F04DE-B

Data Sheet

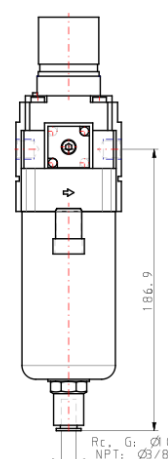
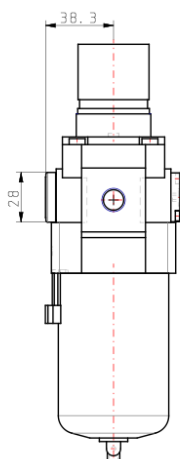
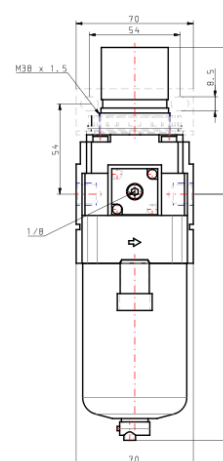
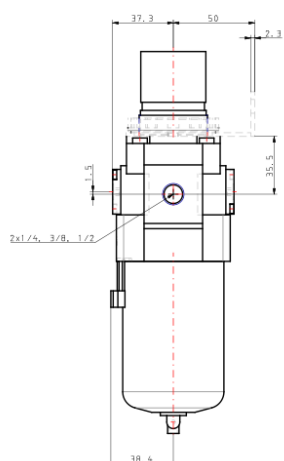
This combination Filter/ Regulator minimizes space and piping by integrating the 2 units into one. Standard features include a relieving regulator, which can be quickly locked by pushing down on the adjustment knob. There are many options, which include gauges, auto-drain, metal bowl and covers, different set pressures, etc. The AW-B is part of the family of modular air preparation units and can be combined with other similar sized products. This series is available in 3 body sizes with piping from 1/8 to 3/4 in Rc, NPT or G thread types. Integrated filter and regulator units save space and require less piping. With the backflow function it incorporates a mechanism to exhaust the air pressure in the outlet side reliably and quickly.



Standard Specifications

Made to Order 1	None
Body Size	40
Backflow Function	None
Thread	G
Port	1/2
Option	D + E
Semi-standard 1	Standard
Semi-standard 2	Standard
Made to Order 2	None
Pressure medium	Air
Maximum temperature of pressure medium	60 °C
Minimum temperature of pressure medium	-5 °C [without condensation]
Maximal operating pressure	1.0 MPa
Proof pressure	1.5 MPa
Maximum ambient temperature	60 °C
Minimum ambient temperature	-5 °C [without condensation]
Conform to the European RoHS Directive	Conform
Approvals	No need
Bowl Material	Polycarbonate
Bowl Guard	Standard (Polycarbonate)
Drain Capacity	45 cm ³
Weight	0.722 kg

Dimensions



Additional information

Catalogue

[AC-B-B_EU.pdf](#)

Installation Manuals

[IM_AW_SMU06EN.pdf](#)

Related Products



[AL40-F04-A](#)

AL10-60-A, Lubricator



[VHS40-F04B](#)

VHS20/30/40/50, Pressure Relief 3 Port Valve w/Locking Holes (Single Action)