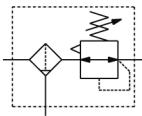


## AW20(\*)-B to AW60(\*)-B, Filter Regulator & Filter Regulator w/Backflow Function AW40-F04DE-B

### Data Sheet

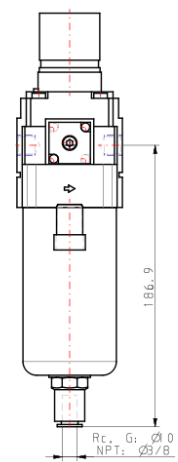
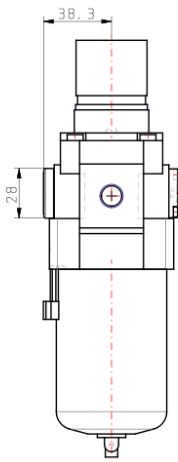
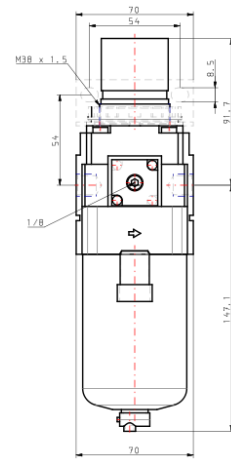
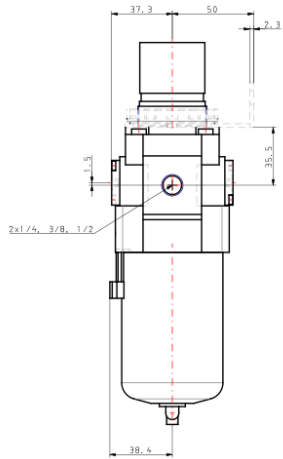
This combination Filter/ Regulator minimizes space and piping by integrating the 2 units into one. Standard features include a relieving regulator, which can be quickly locked by pushing down on the adjustment knob. There are many options, which include gauges, auto-drain, metal bowl and covers, different set pressures, etc. The AW-B is part of the family of modular air preparation units and can be combined with other similar sized products. This series is available in 3 body sizes with piping from 1/8 to 3/4 in Rc, NPT or G thread types. Integrated filter and regulator units save space and require less piping. With the backflow function it incorporates a mechanism to exhaust the air pressure in the outlet side reliably and quickly.



## Standard Specifications

|  |                              |
|--|------------------------------|
| Made to Order 1                        | None                         |
| Body Size                              | 40                           |
| Backflow Function                      | None                         |
| Thread                                 | G                            |
| Port                                   | 1/2                          |
| Option                                 | D + E                        |
| Semi-standard 1                        | Standard                     |
| Semi-standard 2                        | Standard                     |
| Made to Order 2                        | None                         |
| Pressure medium                        | Air                          |
| Maximum temperature of pressure medium | 60 °C                        |
| Minimum temperature of pressure medium | -5 °C [without condensation] |
| Maximal operating pressure             | 1.0 MPa                      |
| Proof pressure                         | 1.5 MPa                      |
| Maximum ambient temperature            | 60 °C                        |
| Minimum ambient temperature            | -5 °C [without condensation] |
| Conform to the European RoHS Directive | Conform                      |
| Approvals                              | No need                      |
| Bowl Material                          | Polycarbonate                |
| Bowl Guard                             | Standard (Polycarbonate)     |
| Drain Capacity                         | 45 cm <sup>3</sup>           |
| Weight                                 | 0.722 kg                     |

# Dimensions



## Additional information

|                      |                                   |
|----------------------|-----------------------------------|
| Catalogue            | <a href="#">AC-B-B_EU.pdf</a>     |
| Installation Manuals | <a href="#">IM_AW_SMU06EN.pdf</a> |

## Related Products



**AL40-F04-A**  
AL10-60-A, Lubricator



**VHS40-F04B**  
VHS20/30/40/50, Pressure Relief 3 Port Valve w/Locking Holes (Single Action)